



MERLIN WRIGHT ASSOCIATES

INTERNATIONAL IP RECRUITMENT SPECIALISTS

# ABOUT US

---

MWA is a European Intellectual Property recruitment firm, placing IP professionals across the globe. We work with patent and trademark attorneys as well as IP Legal specialists; innovation experts and support services. We specialise in European placements but, our presence is ever-expanding around the world.

We work across a diverse range of industries as well as private practice firms. Our style of intellectual property recruitment is bespoke, collaborative and personal. Our involvement doesn't end when the position is filled. Instead, we continue supporting the transition and are dedicated to ensuring post-placement success.

MWA has hired IP attorneys worldwide for over 30 years. Our team has appointed across 20 countries and in over 20 leading industries. Since our inception, we have remained a value driven company - with people always at the centre of what we do.

We have worked with over 100 clients and our network of contacts spans across the globe. We understand Intellectual Property and we are passionate to ignite career-defining opportunities.



# OUR SERVICES

---



## PATENTS

At MWA we know patents. With a long-standing history in the profession, we have built relationships with attorneys and clients across the globe. We have worked in all industry sectors and in top-tier private practice firms.

Regardless of your patent needs, we can offer support and expertise.



## TRADEMARKS

We also have considerable expertise in placing talented trademark attorneys from Shanghai to Amsterdam.

Just as we know patents, we too know trademarks. We understand the needs of our clients and know when and how differing qualifications are needed. MWA are here to support you in finding the right attorney.



## IP LEGAL

We offer a comprehensive recruitment service in the IP sector. Recently, we begun expanding our business into the IP legal field.

We have placed a diverse range of positions from IP attorney-at-law to Director IP. We provide support to our clients that helps to define and discover the perfect candidate for each unique position.



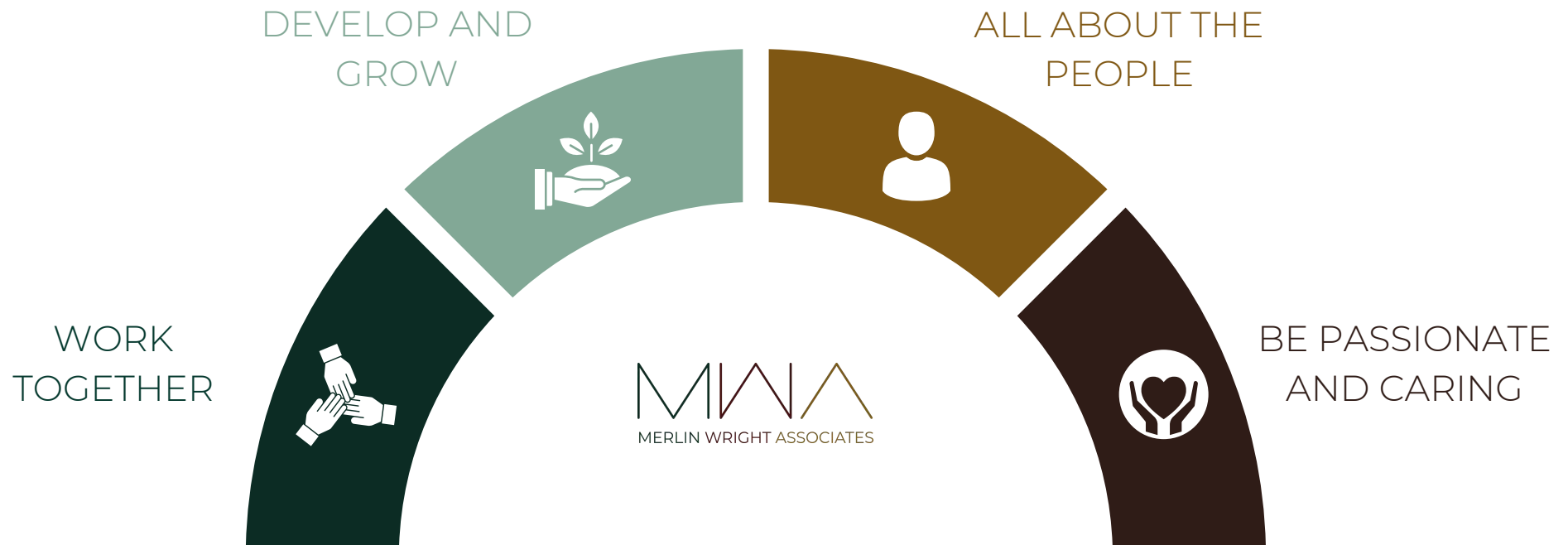
## SUPPORT SERVICES

Here, at MWA, we know how important and valued every member of the team is.

We have built up a successful division to support a range of IP functions including, paralegals formalities and patent searches. We offer a bespoke service to suit the needs of each client.

# OUR VALUES

---



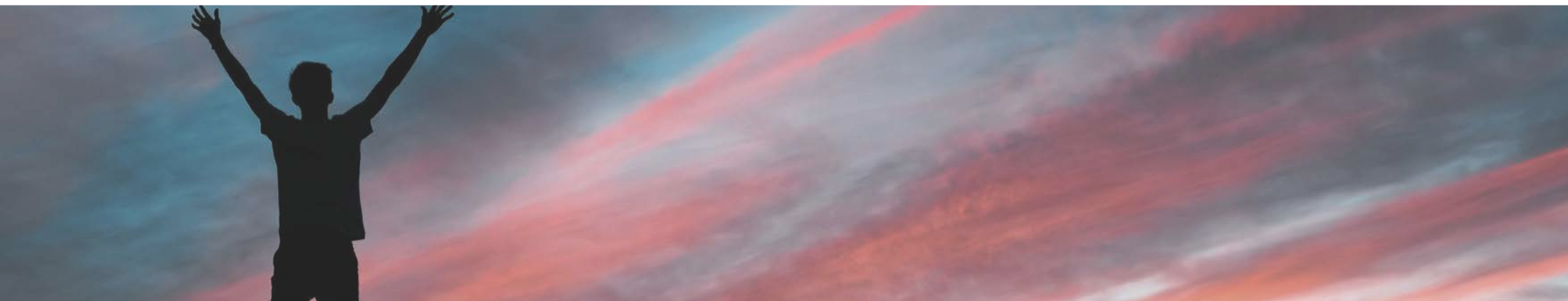
MWA aspires to be one of the top IP recruitment firms in Europe, with a value-driven approach to passionately and cooperatively working alongside our clients and candidates. We aim to bring our knowledge and expertise to allow opportunities to flourish and to open avenues within the world of intellectual property. Simply, *our team thrives from helping your team.*



“I felt like I could **rely on MWA** - it was obvious they had the interests of the company and mine in their minds *at all times*.”

---

*MWA candidate*



# OUR PROCESS

---

Our recruitment process is a successful and effective approach based upon a wealth of knowledge from our team and the influence of successful theology from the Adler 'Performance Based Hiring' Model. As a recruitment firm, we approach passive candidates who are not actively looking to move roles. In order to succeed in placing the most suitable candidates, our recruitment always follows the following stages:



# OUR TEAM

---



## KIERON WRIGHT

DIRECTOR

As founding director, Kieron has forged strong partnerships with leading IP firms and in-house departments across the globe. He has more than 25 years experience in the IP industry. In his spare time, Kieron loves watching his son play rugby and teaching junior sailors at the local sailing club, where he is also a member.



## GRAHAM MARLOW

ASSOCIATE DIRECTOR

Graham has a wealth of experience in all aspects of the IP recruitment sector spanning over 20 years. Previously, he ran his own successful UK IP recruitment practice, Marlow IP. Graham is a sports enthusiast; when he is not watching sporting events, he enjoys walking his rescue dog, Tia.



## LISA WRIGHT

FINANCE DIRECTOR

Lisa has worked for MWA since its inception and provides back office support in respect of assignment administration and financial management systems. Lisa built her career in marketing and administration prior to joining MWA. Outside work, Lisa loves art and visiting galleries as well as exploring interior design.



## LOUISE DALE

SEARCH ASSOCIATE

Louise has been involved in European recruitment for many years. She is very involved in the day to day running of assignments ensuring that the recruitment process runs smoothly and to a high standard. Louise loves cooking and exploring her surrounds in the French countryside.



## RACHEL ATKINS

SEARCH ASSOCIATE

With a background in Psychology, Rachel provides assignment research support and client and candidate communication. She also manages the MWA online communication and creative marketing department. Aside from her work, Rachel loves reading, travelling and walks with her dog, Bernard.



## SOPHIE CAYGILL

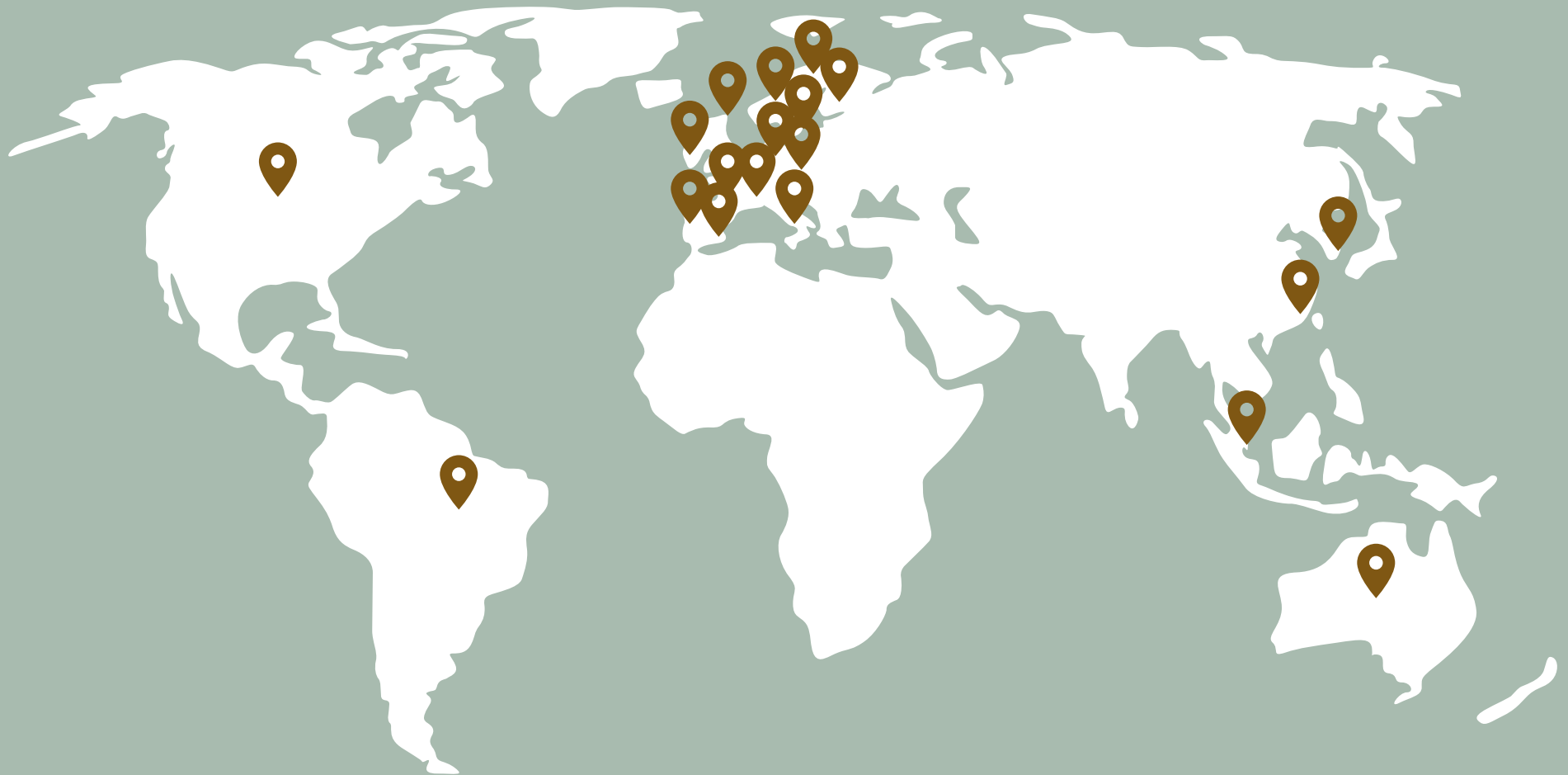
SEARCH ASSOCIATE

Sophie brings a wealth of knowledge to the team, having worked in IP recruitment for over 15 years. She has worked with clients across the group and manages the candidate care at MWA. In her spare time, Sophie loves being outdoors with her family; she is also a passionate baker.

# OUR EXPERIENCE

---

We have worked in over 20 different countries across the globe, building a network of attorneys from Singapore to Amsterdam and Munich to Brazil. We may be European specialists, but our experience continues to grow and we are always ready to expand our presence.







“ MWA have a pragmatic and grounded approach which has helped me to  
**make the best choices** ”

---

*Global Head of IP, Atlas Copco*

# OUR CANDIDATES

---

At MWA, we always aim to provide a thoughtful experience to all of our candidates. We are here to support each and every candidate throughout their transition. Our candidate offer is underpinned by the following three values to ensure candidate's have full confidence in their partnership with MWA.

## CONFIDENTIALITY

- Build relationships based on trust.
- Protect all of your details and handle information with the utmost discretion.
- Act sensitively and responsibly to support you in exploring new and exciting opportunities.

## CARE

- Establish long-lasting relationships with our candidates.
- Have our candidate's best interests at heart.
- Care about our candidates and clients and take pride in supporting the inception of new opportunities between the two.

## COOPERATION

- Work alongside you to help you achieve your next career move.
- Listen carefully to create your best and strongest candidacy.
- Support you in taking your career in a new and exciting direction.



# OUR CLIENTS

---

We have had the pleasure of working with a variety of esteemed clients across both private practice and industry. Our experience and client portfolio is ever-growing. Regardless of your companies standing and size, we are here to help your IP recruitment needs. We highly value our client relationships and look forward to fostering new relationships across the globe.

---



# OUR CONTACT

---

## HEADQUARTERS

Riddings Hall  
Riddings Road  
Leeds

LS29 9LW

United Kingdom

+44 (0) 11 3391 0862

## LONDON

20 - 22 Wenlock Road  
London  
N1 7GU  
United Kingdom

+44 (0)204 530 9505

## PARIS

Tour CB21 16  
Place de L'leis  
Courbevoie La Défense  
Courbevoie, 92400  
France

+33 (0) 6 75 89 25 65

CONNECT WITH US



MWA  
MERLIN WRIGHT ASSOCIATES